



# Revere Football Ar- chives

## Acknowledgments

This has been a daunting task—but a love of two of my favorite things: Sports and History. I am extremely pleased with the results and am glad that such a written history now exists for the football program. I hope everyone enjoys it.—Phil Heyn (Class of 1996)

- Thanks you for those sources and people that contributed to this compilation, including but not limited to:

- Reverie (RHS Yearbook: 1952 to Present)
- Lantern (RHS School Newspaper: 1952 to Present)
- Todd Osborn and the Athletic Department
- Ann Coughlin and the Library Staff
- Joe Pappano (Former Head Football Coach)
- Terry Cistone (Current Head Coach)
- Don Rylands (1962)
- Geoff Aughenbaugh (1979)
- Barbara (Hager) Glaser (1960)
- Jim Davis (1962)
- Gary Workman (1975)

Errors/Mistakes: This is a project that I am volunteering my time to do—so please be patient and understanding. Please contact me for additions and/or corrections. ([Pheyn@revere.k12.oh.us](mailto:Pheyn@revere.k12.oh.us)).

- This archive is a work in progress. There are many things that have been lost over the years that we would love to recover. I need help filling in the gaps and missing information.
  - We would love information, scans/copies/or original scrapbooks, etc.
  - For statistical information or honors, please submit with documentation verifying the validity of the record (accepted would be items such as copies of newspaper clippings, copies of scorebooks, copies of end of the year programs, or copies of yearbooks).
  - We are looking to get materialistic things that you are will to part with: old game programs, award banquet programs, memorabilia, etc.

# Revere Football Archives Tables of Contents

|   |               |
|---|---------------|
| <b>History of Revere Local School District</b>          | <b>4</b>      |
| <b>History of Revere High School</b>                    | <b>5-7</b>    |
| <b>History of Revere Athletics</b>                      | <b>8-11</b>   |
| <b>History of the Suburban League</b>                   | <b>12-14</b>  |
| <b>History of Revere Football &amp; W/L Records</b>     | <b>15-17</b>  |
| <b>Head Coach Profiles</b>                              | <b>18-19</b>  |
| <b>Support Staff</b>                                    | <b>20-23</b>  |
| <b>Team Awards</b>                                      | <b>24-25</b>  |
| <b>Copley Rivalry</b>                                   | <b>26-27</b>  |
| <b>Football Traditions</b>                              | <b>28-29</b>  |
| <b>Football Facilities</b>                              | <b>32-41</b>  |
| <b>Minutemen Football at the Next Level</b>             | <b>42-43</b>  |
| <b>Captains</b>   | <b>44-45</b>  |
| <b>All-League</b>                                       | <b>46-49</b>  |
| <b>Miscellaneous Awards/Honors</b>                      | <b>50-52</b>  |
| <b>All-Time Series Records and Yearly Scores</b>        | <b>53-59</b>  |
| <b>Single Season Team Pitching Records</b>              | <b>31</b>     |
| <b>Team Statistical Records</b>                         | <b>62-66</b>  |
| <b>Individual Season and Career Statistical Records</b> | <b>67-77</b>  |
| <b>All-Time Lettermen</b>                               | <b>78-93</b>  |
| <b>Minutemen Team Pictures</b>                          | <b>94-103</b> |

# History of Revere Local School District

## Region

The Connecticut Western Reserve was land claimed by Connecticut in the Northwest Territory in what is now northeastern Ohio. Early settlers called the territory "New Connecticut," but that name was later discarded in favor of "Western Reserve." In 1796, Connecticut sold that land to investors, eight investors from Suffield, Connecticut. These investors formed the Connecticut Land Company which then surveyed the land as well as encourage settlement.

## Richfield

**Township**—In 1809 Lancelot Mays came to this area with his wife and built a log cabin on the property at 3600 & 3636 Broadview Road. The land belonged to Herman Oviatt who had purchased it from the Connecticut Land Company. In April of 1816, by the authority of the Commissioners of Portage County (to which Richfield belonged at the time) Richfield became its own township. The way it received its name has two versions: 1) it was given name Richfield due to the fertile soil that the area contained; 2) it was given the name Richfield due to the large amount of "Oxbalm" or "rich feed" available to feed cattle.

**Schools**—In 1816 Richfield Township built a building that served as town hall, church, court, social hall, and school house. Leamon Farnham, son of early settler John Farnhm, was the first teacher. In the coming years, Richfield had a number of one-room schools scattered throughout the township (i.e. West Richfield School—now part of the Masonic Temple, No. 2 School—on Hawkins Road). In 1914, Richfield combined all their local schools into one, Richfield High School, located on Rt. 303. The students were known as the Richfield Rockets.

## Bath

**Township**—The first permanent settlers, Jonathan Hale and Jason Hammond came in 1810, and eight years after that, 1818, the township was officially organized. When the township first formed, the big question was what to call it. Jonathan Hale is alleged to have said, "Call it Jerusalem, Jericho, or Bath, or anything but Hammondsburgh (the name the township had become known as)." After a vote by the residents, the township was officially named Bath.

**Schools**—From 1877 to 1923, the township had 11 one-room schoolhouses (including Ira School, McAllister School, East Bath School, Hammond's Corners School, Ghent School and Bath Center School). In 1923, all of the one-room schools closed and the centrally located Bath School opened its doors. Bath School was a K-12 building located on the corner of Cleveland-Massillon and Bath Roads. The students were known as the Bath Buccaneers.

## Revere

In 1949, discussions began between Bath and Richfield regarding the consolidation of their two school districts started. On November 14, 1949, Summit County Board of Education officially recognized the new system and named it the "Bath-Richfield Local School District. In the early part of 1950, The Bath-Richfield School Board supervised the purchase of 28 acres for the site of the new school at the intersection of Revere and Everett Roads. While the school was being built, high school students spent half a day at Bath School and half a day at Richfield School.

On October 5, 1950, the school board selected "Revere High School" as the name for the new school. The name—which was eventually also selected as the name of the school district—was first suggested by long time teacher and coach Gordan E. Knapp based on the road the new school was being build on. On November 13, 1950, the students voted Red, White, and Blue as the district's colors and "Minutemen" was selected as the mascot based on the inspiration of the new name of the school. On May 29, 1952 the first graduating class of the Revere Local School District held their commencement in the Richfield School auditorium.

# History of Revere High School

## Forming of the School and Early Days

In the early part of 1950, The Bath-Richfield School Board supervised the purchase of 28 acres for the site of the new school at the intersection of Revere and Everett Roads. On October 5, 1950, the school board selected "Revere High School" as the name for the new school. The name was first suggested by long time teacher and coach Gordan E. Knapp based on the road the new school was being build on. Revere would also eventually be selected as the name of the actual school district school district. On November 13, 1950, the students voted Red, White, and Blue as the district's colors and "Minutemen" was selected as the mascot based on the inspiration of the new name of the school.

The school began construction in August of 1951. Starting in September of 1951, students spent half a day at Bath School and half a day at Richfield School while the school was being built, high school. Publication of the *Revere Lantern* replaced the *Bath Hi-Spy* and the *Richfield Echo*. The yearbook became the *Revere Review* and in ??? was changed to the *Reverie*. Over the next year, there was a complete union of all school activities, functions, and faculty. Mr. M. Pugh was the first Superintendent and Harold Schweiserberger was the first principal.

On May 29, 1952 the first graduating class of Revere held their commencement in the Richfield School auditorium. In February of 1952 the alma mater, *Revere Revere*, was chosen. The music was composed by Professor David T. Plank (a former Bath Resident) and the words were written by his mother, Mrs. Eulalia Plank. The Revere PTA was formed on March 31, 1953 with Mrs. L. Wyatt serving as the first president. The Revere Alumni Association (RAA) was formed in July of 1953 by Mike McCoy, Wanda Barthlomew, and Craig Richmond.

Starting in the fall of 1961, Revere High School became a 10-12 school after the freshmen began attending Eastview Junior High. The Freshmen returned in ????

|  |                     |   |            |
|--|---------------------|---|------------|
| <b>Cost of classroom section .....</b>       | <b>\$443,891.32</b> | <b>Present enrollment .....</b>           | <b>210</b> |
| <b>Cost of gymnasium and auditorium ....</b> | <b>\$153,846.00</b> | <b>Seating capacity of gymnasium ..</b>   | <b>650</b> |
| <b>Cost of equipment .....</b>               | <b>\$80,000.00</b>  | <b>Seating capacity of auditorium ...</b> | <b>362</b> |
| <b>Cost of site .....</b>                    | <b>\$9,000.00</b>   |   |            |

### Statistics at the Schools Opening

## The Building

On June 17, 1951, a ground breaking ceremony was held for the new high school and construction began in August of 1951.

On January 20, 1953, all high school students moved into the new school. The original school was two floors and currently makes up the main two hallways of the current school. The cafeteria was up and running by the Fall of 1953. A gymnasium and auditorium were built and finished by December of 1953. (Note: In the current school—the original classroom section makes up the main two hallways, the gymnasium is now the Auxiliary Gym, the auditorium is now the band and chorus rooms). The official dedication of the school occurred on March 21, 1954.

In the Spring of 1957, an addition was added to Revere High School. The addition extended the building further west and added an industrial arts shop and several classrooms.

In 1981, an addition was added to RHS. The addition added a new gymnasium, locker rooms, auditorium, enlarged the cafeteria, added an elevator, and added classrooms to the art wing. [Note: the old gym became the library].

# History of Revere High School

# Miscellaneous History of Revere High School

## Senior Rock

The original rock came with the school property and received its first paint job shortly after the school opened. In 1968, however, students did not stop at painting the rock and began to paint the school as well. In response, the school board ordered the rock removed so a hole was dug and the rock was buried. But mysteriously a new rock reappeared. Several seniors from the class of '68 got a truck with a crane and transported a rock from Canton to Revere. Administration threatened to haul the new rock away but a petition by the students saved the rock.



## RHS Marquee

The marquee was constructed in 1984 in memory of Marianne Mertie. She died in February 1992 in a car accident—she was a senior at Revere.



## Gordon E. Knapp Memorial Addition

The RHS student council dedicated the new auditorium and main gym area to Gordon E. Knapp in 1981. Knapp was a teacher, coach, and principal who taught in the district from 1941 to 1980. The day before Mr. Knapp officially retired, was involved in a fatal car crash on his way home.



## RHS Entrance Tee

The was planted in 1992 in memory of Becky Strazinsky. She died September 24, 1983 in a car accident—she was a senior at Revere.



## William E. Moats Entrance Tee

The was planted in ??? in memory of Eric Morant. Eric graduated from RHS in 1990 and was a key member of the 1989 championship football team. Eric was killed in a fatal car crash.



## Cafeteria Entrance Tee

## Veterans Memorial

The RHS Veterans Memorial was built in 2008 as an Eagle Scout project for Kevin Papp ('08). The memorial is located between the football, baseball, and softball fields.

# History of Revere Athletics

## Revere Sports

Prior to there being a Revere, there was Bath Buccaneers and the Richfield Rockets. The two different districts had a number of sports and actually competed against each other in the Summit County League.

In 1950, the two districts decided to combine—starting with the 1950 football team. Basketball would combine the following year. And in 1952, permanent sports department was established with Kermit Smulbach serving as the athletic director. The school sponsored football, cheerleading, men's basketball, men's track, and baseball. Football, track, and baseball competition were held at Bath Field while basketball was held at Richfield Gymnasium.

Girls at Revere, with the exception of cheerleading, did not have organized sports sponsored by the Athletic Department. But Bath and Richfield girls combined to become Revere's Y-Teens. Y-Teens (formerly Girl Reserves) is a club that is affiliated with the Youth Women's Christian Association (YMCA). There was 29 local high schools that had Y-Teen clubs. Revere girls first competed in swimming and basketball in 1952 and other sports were added through the years.

In 1972-1973, girl's sports were added to Suburban League competition.

## Revere Groups/Clubs

On March 28, 1952, Booster Club reorganized under the name Revere—Carl Deitrich served as the first president.

Varsity R Club was formed in 1954 (called the Lettermen's Club). It was organized by Coach Frank DiNapoli and was open to all those who have received a letter for football, basketball, baseball, track, and managing any of the sports—Bob Wells served as the as the first Student-President of the organization.

## Ohio High School Athletic Association

The Ohio High School Athletic Association is a voluntary, unincorporated, not-for-profit association of public and private high schools. The impetus for the founding of the Ohio High School Athletic Association came from the Western Ohio Superintendents Round Table as a result of discussions in the 1890's and early 1900's. At the March, 1906, meeting of the Round Table, a resolution was adopted to appoint a committee headed by George R. Eastman of Steele High School in Dayton. The OHSAA started with five districts in 1907, but soon changed to six districts in 1908. The OHSAA sponsors state championships in 11 boys sports and 11 girls sports as a result of that humble beginning of one in 1908.

# History of Revere Athletics

## Revere Facilities

### Football/Track/Soccer

- Originally the Minutemen football team and track team held their competitions at Bath School on Bath Field. In the fall of 1955, construction on a new field. The field was located at Revere High School, at the corner of Everett and Revere Roads, and include a new lighted field and track.
- On October 31, 1958, Revere High School Football Field was officially dedicated.
- On September 8, 1962 a dedication ceremony was held to commemorate the completion of a number of projects to the field, including new 1,200 seat steel bleachers.
- In 1994 the stadium received a major facelift with addition of new visitor bleachers, an all-weather track, new permanent fencing around the field and stadium, and paving around the stadium to replace the gravel.
- In 2002, new home bleachers were added along with an impressive press box.
- In 2002, the stadium was rededicated and named after longtime football coach, Joseph F. Pappano.

### Basketball/Wrestling/Volleyball

- The home for winter sports was the Richfield Gymnasium.
- In 1953, a gymnasium was added on the 1-year old Revere high school.
- In 1981, a major addition was added to RHS. The addition added a new gymnasium, locker rooms, multipurpose room (wrestling and gymnastics room).
- In 1995, an Auxiliary Gym was added by converting the library to a gymnasium.

### Baseball/Softball

- The home of the baseball team was originally Bath Field (Richfield Field was “too tough because it was scraped too much”).
- In 1961 a new baseball field was built at the current high school (where the current softball field is located). In 1968, spectator stands were built.
- In 1972 a new baseball field was built at its current location, next to the bus garage and the old baseball field was converted to a softball field.
- The baseball and softball fields under went major facelifts in 2004 when both

# History of Revere Athletics

## **Fall** (year it became a sport at Revere and year it became a OHSAA recognized sport)

- **Football—1950 (OHSAA—1972)**
- **Men's Soccer—1978 (OHSAA—1976)**
- **Women's Soccer—1986 (OHSAA—1985)**
- **Men's Golf—1960 (OHSAA—1927)**
- **Women's Golf—2000 (OHSAA—1993)**
  - Individual women occasionally played on men's team prior to formation of a women's team—first being in 1990
- **Volleyball—1972 (OHSAA—1975)**
  - Women played against each other in "Y-Teens League" hosted at the YWCA starting in 1958
- **Women's Tennis—1979 (OHSAA—1977)** [Individual/Doubles only, no Team championships]
  - Individual women occasionally played on men's team prior to formation of a women's team—first instance being in 1974.
- **Men's Cross Country—1967 (OHSAA—1928)**
- **Women's Cross Country—1981 (OHSAA—1978)**
  - Individual women have participated on men's team prior to formation of a women's team—first being in 1979

## **Winter** (year it became a sport at Revere and year it became a OHSAA recognized sport)

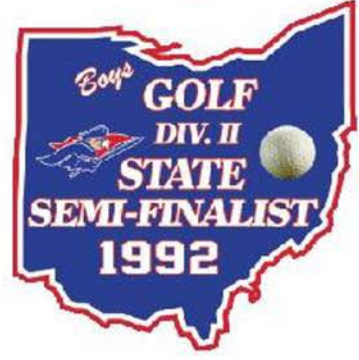
- **Boy's Basketball—1952 (OHSAA—1928)**
- **Girl's Basketball—1972 (OHSAA—1976)**
  - Women played against each other in "Y-Teens League" hosted at the YWCA starting in 1952
- **Wrestling—1957 (OHSAA—1938)**
  - No team in 1958 and 1959
  - No team in 1963 to 1968
- **Gymnastics—1972 (OHSAA—1977)**
  - There was a girl's team formed in 1972 but there is currently no team, occasionally some girls will compete individually and represent Revere (the latest in 2001).
  - In 1990, Mark Webber competed in gymnastics as a representative of Revere.
- **Men's Swimming—1997 (OHSAA—1928)**
- **Women's Swimming—1997 (OHSAA—1977)**
  - A team existed for several years participating in the "Y-Teens League" host by the YWCA starting in 1952 but only last a few years.

## **Spring** (year it became a sport at Revere and year it became a OHSAA recognized sport)

- **Baseball—1952 (OHSAA—1928)**
  - No team in 1955 and 1956
- **Softball—1973 (OHSAA—1978)**
  - Softball transitioned from slow-pitch to fast-pitch
- **Men's Track—1952 (OHSAA—1908)**
- **Women's Track—1977 (OHSAA—1978)**
- **Men's Tennis—1969 (OHSAA—1922)** [Individual/Doubles only, no Team championships]
- **Men's Lacrosse—2011 (OHSAA—N/A)**
  - Established as an independent club team in 1994, became a school recognized club sport in 2004, and will become a school sponsored sport in 2011.
- **Women's Lacrosse—2011 (OHSAA—N/A)**
  - Established as an independent club team in 1996, became a school recognized club sport in 2004, and will become a school sponsored sport in 2011.

# History of Revere Athletics

|  |   |  |   |  |  |   |
|--|---|--|---|--|--|---|
|  <b>BASEBALL CHAMPIONS LEAGUE</b><br>1954 1965 1972 1981<br>1983 1984 1985 1987<br><br>DISTRICT |  <b>SOFTBALL CHAMPIONS LEAGUE</b><br>1973 1974 1975 2005<br>2006<br><br>DISTRICT |  <b>WRESTLING CHAMPIONS LEAGUE</b><br>1988 1989 1990<br><br>SECTIONAL                                     |  <b>FOOTBALL CHAMPIONS LEAGUE</b><br>1966 1967 1980 1981<br>1982 1983 1988 1989<br>1990 1992 1994 1998<br><br>PLAYOFFS<br>1980 1989 1990 1992<br>1995 1998 2002 2005 |  <b>VOLLEYBALL CHAMPIONS LEAGUE</b><br>1974 1975 1976<br><br>DISTRICT   |  <b>SOCCER CHAMPIONS LEAGUE</b><br>1987 1988 1996 2000<br>2001 2002 2003<br><br>DISTRICT<br>1987 1988 1995 2000<br>2004       |  <b>SOCCER CHAMPIONS LEAGUE</b><br>1992 1993 1998 2006<br><br>DISTRICT |
|   |   |  <b>CROSS COUNTRY CHAMPIONS LEAGUE</b><br>1998 1999<br><br>SECTIONAL                                      |  <b>CROSS COUNTRY CHAMPIONS LEAGUE</b><br>2005<br><br>SECTIONAL  |  <b>GOLF CHAMPIONS LEAGUE</b><br>1992 1996 1997 2006<br>2007 2008<br><br>SECTIONAL<br>1987 1988 1990 1992<br>1996 1997 2008 |  <b>GOLF CHAMPIONS LEAGUE</b><br>1998<br><br>SECTIONAL  |   |
|  |   |  <b>BASKETBALL CHAMPIONS LEAGUE</b><br>1954 1963 1964 1965<br>1967 1968 1969 1972<br>1976<br><br>DISTRICT |  <b>BASKETBALL CHAMPIONS LEAGUE</b><br>1973 1974 1975 1978<br><br>DISTRICT   |  <b>SWIMMING CHAMPIONS LEAGUE</b><br>2007 2008<br><br>SECTIONAL   |  <b>SWIMMING CHAMPIONS LEAGUE</b><br><br>SECTIONAL  |   |
|  |   |  <b>TRACK CHAMPIONS LEAGUE</b><br>1990<br><br>DISTRICT  |  <b>TRACK CHAMPIONS LEAGUE</b><br>1959 1980 1988<br><br>DISTRICT   |  <b>TENNIS CHAMPIONS LEAGUE</b><br>1979 1980 1986 1997<br>1998 1999 2000 2001<br>2002 2003 2004<br><br>SECTIONAL            |  <b>TENNIS CHAMPIONS LEAGUE</b><br>1996 1997 1998 1999<br>2000 2001 2002 2003<br>2004 2005 2006 2007<br>2008<br><br>SECTIONAL |   |



# The History of the Suburban League

The Suburban League is an outgrowth of the old Summit County League. The Summit County League consisted of 13 schools including: Bath (Revere), Richfield (Revere), Greensburg (Green), Boston Township (Woodridge), Northfield-Macedonia (Nordonia), Copley, Twinsburg, Manchester, Hudson, and Mogadore.

In 1949, Copley, Greensburg (Green), Hudson, Manchester, and Northfield-Macedonia (Nordonia) formed the Suburban League. The League operated with the original five schools for eight years although Medina Highland (formerly Sharon-Granger) did participate in the League in football County League. In 1957—Revere, Boston Township (Woodridge), Mogadore, and Twinsburg (Chamberlin)—merged to make the league nine teams.

The League existed with nine schools until 1964 when Chamberlain left to join the Chagrin Valley Conference.

The League introduced the All-Sports Trophy in 1967-1968 which is awarded to the school that does the best in all sports competitions combined.

Mogadore withdrew following the 1967-68 school year to join the Portage County League. The League operated with seven schools until Coventry left the Metropolitan League to become a member in 1969-1970.

In 1972-1973, girl's sports were added to Suburban League competition—they had previously competed in Y-Teens as part of the YWCA.

When Norton withdrew from the Metropolitan League and was admitted to membership in 1972-73, the League again had nine members. But Nordonia withdrew the following season to become a member of the Metropolitan League.

Medina Highland joined the Conference when Manchester opted to join the All-Ohio Conference in 1976. Field replaced Woodridge in 1978, and when Coventry left to join the All-Ohio Conference following the 1982-83 school year, the League again operated with seven schools. Wadsworth was admitted to membership in December of 1981 and began actively participating in the fall of 1984.

In 1990, Field withdrew from the League to join the Portage County League and Tallmadge left the Metropolitan League to join the Suburban League.

After the 1996-97 season, Hudson left the League to join the Western Reserve Conference. Cloverleaf High School withdrew from the Pioneer Conference and began the Suburban League competition in the 1997-98 school year.

In 2005, Norton left to join the new two-tier 16-school Portage Trail Conference. Barberton with-

## Suburban League (2005-Present)



# The History of the Suburban League



## Barberton High School

**Location:** Barberton, Ohio  
**Website:** [www.barbertonschools.org](http://www.barbertonschools.org)  
**Enrollment:** 956: (B—510)  
**Division:** II  
**Region:** 5  
**Nickname:** Magics  
**Colors:** Purple and White  
**Home Field:** Sharkey Stadium  
**SLC:**  
**Playoffs:** 1991, 1998



## Cloverleaf High School

**Location:** Lodi, Ohio  
**Website:** [www.cls.k12.oh.us](http://www.cls.k12.oh.us)  
**Enrollment:** 890: (B—475)  
**Division:** II  
**Region:** 6  
**Nickname:** Colts  
**Colors:** Green and White  
**Home Field:**  
**SLC:**  
**Playoffs:** 2008



## Copley High School

**Location:** Copley, Ohio  
**Website:** [www.copley-fairlawn.org](http://www.copley-fairlawn.org)  
**Enrollment:** 788: (B—398)  
**Division:** II  
**Region:** 5  
**Nickname:** Indians  
**Colors:** Navy and Gold  
**Home Field:**  
**SLC:**  
**Playoffs:** 1985, 1994, 1998, 1999, 2000, 2002, 2003, 2004, 2005



## Green High School

**Location:** Green, Ohio  
**Website:** [www.greenlocalschools.org](http://www.greenlocalschools.org)  
**Enrollment:** 1,092: (B—593)  
**Division:** I  
**Region:** II  
**Nickname:** Bulldogs  
**Colors:** Orange and Black  
**Home Field:** Memorial Stadium  
**SLC:**  
**Playoffs:** 1993, 2000, 2001, 2002, 2003, 2004, 2005



## Highland High School

**Location:** Medina, Ohio  
**Website:** [www.highlandschools.org](http://www.highlandschools.org)  
**Enrollment:** 775: (B—385)  
**Division:** II  
**Region:** 6  
**Nickname:** Hornets  
**Colors:** Green and Black  
**Home Field:**  
**SLC:** 1979, 2001, 2008  
**Playoffs:** 2000, 2001, 2008



## Revere High School

**Location:** Richfield, Ohio  
**Website:** [www.revere.k12.oh.us](http://www.revere.k12.oh.us)  
**Enrollment:** 739: (B—378)  
**Division:** II  
**Region:** 5  
**Nickname:** Minutemen  
**Colors:** Red, White, Blue  
**Home Field:** Joseph F. Pappano Stadium  
**SLC:** 1966, 1967, 1980, 1981, 1982, 1983, 1988, 1989, 1990, 1990, 1992, 1994, 1998  
**Playoffs:** 1980, 1989, 1990, 1992, 1995, 1998, 2002, 2005



## Tallmadge High School

**Location:** Tallmadge, Ohio  
**Website:** [www.tallmadge.k12.oh.us](http://www.tallmadge.k12.oh.us)  
**Enrollment:** 702: (B—398)  
**Division:** II  
**Region:** 5  
**Nickname:** Blue Devils  
**Colors:** Blue and Gold  
**Home Field:**  
**SLC:** 2004, 2005, 2006, 2007, 2008  
**Playoffs:** 2004, 2005, 2006, 2007, 2008



## Wadsworth High School

**Location:** Wadsworth, Ohio  
**Website:** [www.wadsworth.k12.oh.us](http://www.wadsworth.k12.oh.us)  
**Enrollment:** 1,121: (B—603)  
**Division:** I  
**Region:** 2  
**Nickname:** Grizzlies  
**Colors:** Red and White  
**Home Field:** Art Wright Stadium  
**SLC:**  
**Playoffs:** 1996, 1999, 2002, 2003, 2007

# The History of the Suburban League

| Year | League Champion | League Runner-Up |
|------|-----------------|------------------|
| 1950 |                 |                  |
| 1951 |                 |                  |
| 1952 |                 |                  |
| 1953 |                 |                  |
| 1954 |                 |                  |
| 1955 |                 |                  |
| 1956 | Boston          | Revere           |
| 1957 |                 |                  |
| 1958 |                 |                  |
| 1959 | Boston & Green  | Revere           |
| 1960 |                 |                  |
| 1961 |                 |                  |
| 1962 |                 |                  |
| 1963 |                 |                  |
| 1964 |                 |                  |
| 1965 |                 |                  |
| 1966 | Revere          |                  |
| 1967 | Revere          |                  |
| 1968 |                 |                  |
| 1969 |                 |                  |
| 1970 |                 |                  |
| 1971 |                 |                  |
| 1972 |                 |                  |
| 1973 |                 |                  |
| 1974 |                 |                  |
| 1975 |                 |                  |
| 1976 |                 |                  |
| 1977 |                 |                  |
| 1978 |                 |                  |
| 1979 | Highland        |                  |
| 1980 | Revere          |                  |
| 1981 | Revere          |                  |
| 1982 | Revere          |                  |
| 1983 | Revere          |                  |

| Year | League Champion | League Runner-Up           |
|------|-----------------|----------------------------|
| 1984 |                 |                            |
| 1985 |                 |                            |
| 1986 |                 |                            |
| 1987 |                 |                            |
| 1988 | Revere          |                            |
| 1989 | Revere          |                            |
| 1990 | Revere          |                            |
| 1991 |                 | Revere                     |
| 1992 | Revere & Hudson |                            |
| 1993 | Green           |                            |
| 1994 | Revere & Copley |                            |
| 1995 | Norton          | Revere                     |
| 1996 |                 |                            |
| 1997 |                 |                            |
| 1998 | Revere          | Wadsworth                  |
| 1999 |                 |                            |
| 2000 |                 |                            |
| 2001 | Highland        | Copley & Green             |
| 2002 | Green           | Wadsworth                  |
| 2003 | Green           |                            |
| 2004 | Tallmadge       |                            |
| 2005 | Tallmadge       |                            |
| 2006 | Tallmadge       | Revere, Wadsworth, & Green |
| 2007 | Tallmadge       |                            |
| 2008 | Highland        |                            |
| 2009 |                 |                            |
| 2010 |                 |                            |
| 2011 |                 |                            |
| 2012 |                 |                            |
| 2013 |                 |                            |
| 2014 |                 |                            |
| 2015 |                 |                            |
| 2016 |                 |                            |
| 2017 |                 |                            |

# History of Revere Football

The tradition began with Mr. C. G. Wise starting “one of the first football squads of the area” shortly after the building of Bath School in 1892. The football team, along with other sports teams at Bath, was known as the Buccaneers. Prior to 1950, the Bath Buccaneers and the Richfield Rockets were two separate districts.

In 1950 with the decision by both districts to combine, the Bath-Richfield School District (Revere) sponsored a football team, playing under the name Bath-Richfield. Kermit Smulbach, the longtime football coach at Bath, was the coach of this first team. In 1951, the team took on its new name—Revere Minutemen. Coach Smulbach coached Revere for three years (1950-1952) but the team struggled, amassing only 3 wins.

In 1953 Coach Frank DiNapoli took over the program and coached for the next four years (1953-1956). During these years, Revere maintained respectability but could not quite break the .500 mark. In 1955, the first freshmen team was formed with Gerald Hutchinson, a former player, serving as the first coach.

In 1957, Coach Fred Ost took the reigns of the team and established stability within the program. Coach Ost had two terms as coach with the first lasting eleven years (1957-1967). A new identity came during this span as Neil Jones and Phil Angelo created the new nickname for the Revere Football Program—“Big Red.” The highlight of these years was the 1966 team that finished 10-0. The team—led by Chuck Penzenik, Chris Zak, Mike Jones, and Bob Stalnaker—outscored their opponents 225-99 on their way to the Suburban League title.

In 1961, the first middle school team was formed—the Eastview Middle School Patriots were coach by Ed Wolski.

In 1968, Coach Homer Pyle took over the program for two years (1968-1969). Coach Pyle’s first year was successful (7-3), while in his second year the team struggled (3-7) with a young team.

In 1970, Coach John Fuller became the head coach, a position he held for two years (1970-1971). The team struggled for these two years, as a fierce league proved too be overwhelming to the Minutemen.

In 1972, Coach Fred Ost returned as coach and continued for the next five years (1972-1976). During Coach Ost’s second term, the team hovered around .500 but could not quite get over the hump. When Coach Ost retired, he did so with 64 career wins (.433 winning percentage) and a number of other accomplishments—including having been name Summit County Coach of the Year.

In 1977, Coach Joe Pappano took over the program and ushered in new era in Revere Football. Coach Pappano would coach for the next 26 years (1977-2002) and become one of the area greats of the high school gridiron. He finished with 160 wins, 9 league titles, 7 state qualifying teams, a 20-6 record against Copley, Ohio High School Coach of the Year in Division II in 1980 and '89 and in Division III in '90, and is a member of the Summit County Sports Hall of Fame. One of Pappano’s former players is Andy McCullom, center for the Detroit Lions, possessor of a Super Bowl ring he won while with the St. Louis Rams, and he is now in his 15th NFL season.

The highlights of these years were the 1980 and 1990 football teams. In 1980, the team finished 9-1-2 and captured the Suburban League Title as well as the DII-Region V Championship. The team—led by Tim Gabel, Steve Magoline, Paul Bollinger, Matt Meyerson, and Paul Anacki—only lost to eventual state champion Youngstown Cardinal Mooney. In 1990, the team finished 13-1 and captured the Suburban League Title as well as finishing as the DIII State Runner-Up. The team—often times referred to as “The State Team” is considered the greatest team in Revere History, outscoring their opponents 286-156. The team was led by a number of key contributors—including Andy Shackelford,

# Revere Football Single Season W/L Records

| Year           | Season     |            |           | League     |           |          | JV         |            |           | Freshmen   |           |          | RMS       |           |          |
|----------------|------------|------------|-----------|------------|-----------|----------|------------|------------|-----------|------------|-----------|----------|-----------|-----------|----------|
|                | W          | L          | T         | W          | L         | T        | W          | L          | T         | W          | L         | T        | W         | L         | T        |
| 2008           | 6          | 4          |           | 3          | 4         | 0        |            |            |           |            |           |          |           |           |          |
| 2007           | 4          | 6          | 0         | 3          | 4         | 0        |            |            |           |            |           |          |           |           |          |
| 2006           | 5          | 5          | 0         | 5          | 2         | 0        | 6          | 3          | 0         | 7          | 2         | 0        | 2         | 5         | 0        |
| 2005           | 6          | 5          | 0         | 5          | 2         | 0        |            |            |           |            |           |          |           |           |          |
| 2004           | 7          | 3          | 0         | 5          | 2         | 0        |            |            |           |            |           |          |           |           |          |
| 2003           | 3          | 7          | 0         | 2          | 5         | 0        |            |            |           |            |           |          |           |           |          |
| 2002           | 5          | 6          | 0         | 3          | 4         | 0        | 4          | 4          | 0         | 4          | 4         | 0        | 4         | 3         | 0        |
| 2001           | 5          | 5          | 0         | 4          | 3         | 0        | 5          | 3          | 1         | 5          | 4         | 0        | 3         | 2         | 1        |
| 2000           | 5          | 5          | 0         | 4          | 3         | 0        | 2          | 5          | 0         | 3          | 6         | 0        | 3         | 2         | 2        |
| 1999           | 7          | 3          | 0         | 5          | 2         | 0        | 6          | 3          | 0         | 6          | 2         | 0        | 2         | 3         | 0        |
| 1998           | 9          | 2          | 0         | 6          | 1         | 0        | 7          | 2          | 0         | 8          | 1         | 0        | 2         | 5         | 0        |
| 1997           | 3          | 7          | 0         | 3          | 4         | 0        | 4          | 4          | 1         | 8          | 1         | 0        | 4         | 3         | 0        |
| 1996           | 6          | 4          | 0         | 4          | 3         | 0        | 5          | 3          | 1         | 7          | 2         | 0        | 3         | 4         | 0        |
| 1995           | 7          | 4          | 0         | 5          | 2         | 0        | 6          | 3          | 0         | 6          | 2         | 0        | 7         | 0         | 0        |
| 1994           | 6          | 4          | 0         | 5          | 2         | 0        | 4          | 3          | 2         | 6          | 3         | 0        | 7         | 0         | 0        |
| 1993           | 4          | 6          | 0         | 1          | 6         | 0        | 5          | 4          | 0         | 4          | 4         | 0        | 3         | 4         | 0        |
| 1992           | 8          | 3          | 0         | 6          | 1         | 0        | 6          | 3          | 0         | 3          | 5         | 0        | 2         | 5         | 0        |
| 1991           | 8          | 2          | 0         | 6          | 1         | 0        | 5          | 4          | 0         | 4          | 4         | 0        | 0         | 7         | 0        |
| 1990           | 13         | 1          | 0         | 7          | 0         | 0        |            |            |           |            |           |          |           |           |          |
| 1989           | 11         | 1          | 0         | 7          | 0         | 0        | 6          | 3          | 0         | 6          | 2         | 0        | 3         | 4         | 0        |
| 1988           | 5          | 5          | 0         | 4          | 2         | 0        | 6          | 3          | 0         | 2          | 4         | 1        | 5         | 1         | 1        |
| 1987           | 2          | 8          | 0         | 2          | 5         | 0        | 2          | 5          | 1         | 4          | 4         | 0        | 3         | 4         | 0        |
| 1986           | 4          | 6          | 0         | 4          | 3         | 0        | 3          | 3          | 2         | 1          | 6         | 0        | 1         | 6         | 0        |
| 1985           | 2          | 8          | 0         | 2          | 5         | 0        | 1          | 7          | 0         | 0          | 7         | 0        | 0         | 6         | 0        |
| 1984           | 5          | 5          | 0         | 5          | 2         | 0        | 3          | 6          | 0         | 5          | 2         | 0        | 0         | 4         | 2        |
| 1983           | 5          | 5          | 0         | 5          | 1         | 0        | 3          | 6          | 0         | 3          | 4         | 0        | 6         | 1         | 0        |
| 1982           | 8          | 2          | 0         | 6          | 1         | 0        | 2          | 5          | 0         | 0          | 6         | 1        | 3         | 2         | 1        |
| 1981           | 7          | 3          | 0         | 6          | 1         | 0        | 2          | 5          | 0         | 6          | 1         | 0        |           |           |          |
| 1980           | 9          | 1          | 2         | 7          | 0         | 0        |            |            |           |            |           |          |           |           |          |
| 1979           | 4          | 6          | 0         | 3          | 4         | 0        | 3          | 5          | 0         | 3          | 4         | 0        |           |           |          |
| 1978           | 5          | 5          | 0         | 0          | 0         | 0        | 4          | 3          | 0         | 5          | 1         | 1        |           |           |          |
| 1977           | 7          | 3          | 0         | 0          | 0         | 0        | 4          | 4          | 1         | 0          | 5         | 2        |           |           |          |
| 1976           | 4          | 6          | 0         | 2          | 6         | 0        |            |            |           |            |           |          |           |           |          |
| 1975           | 4          | 6          | 0         | 0          | 0         | 0        | 1          | 6          | 2         |            |           |          |           |           |          |
| 1974           | 2          | 7          | 1         | 0          | 0         | 0        |            |            |           |            |           |          |           |           |          |
| 1973           | 1          | 9          | 0         | 0          | 0         | 0        |            |            |           |            |           |          |           |           |          |
| 1972           | 4          | 5          | 1         | 3          | 5         | 0        |            |            |           |            |           |          |           |           |          |
| 1971           | 1          | 8          | 1         | 0          | 0         | 0        |            |            |           |            |           |          |           |           |          |
| 1970           | 0          | 10         | 0         | 0          | 0         | 0        |            |            |           |            |           |          |           |           |          |
| 1969           | 3          | 7          | 0         | 0          | 0         | 0        |            |            |           |            |           |          |           |           |          |
| 1968           | 7          | 3          | 0         | 0          | 0         | 0        |            |            |           |            |           |          |           |           |          |
| <b>'50-'08</b> | <b>280</b> | <b>292</b> | <b>12</b> | <b>141</b> | <b>90</b> | <b>0</b> | <b>105</b> | <b>105</b> | <b>11</b> | <b>106</b> | <b>86</b> | <b>5</b> | <b>63</b> | <b>71</b> | <b>7</b> |

# Revere Football Single Season Coaching W/L Records

| Year | W  | L  | T | Coach    |
|------|----|----|---|----------|
| 1950 | 2  | 4  | 2 | Smulbach |
| 1951 | 1  | 8  | 0 | Smulbach |
| 1952 | 0  | 8  | 0 | Smulbach |
| 1953 | 1  | 7  | 1 | DiNapoli |
| 1954 | 4  | 5  | 0 | DiNapoli |
| 1955 | 1  | 8  | 0 | DiNapoli |
| 1956 | 4  | 5  | 0 | DiNapoli |
| 1957 | 4  | 5  | 0 | Ost      |
| 1958 | 5  | 4  | 0 | Ost      |
| 1959 | 5  | 4  | 0 | Ost      |
| 1960 | 4  | 4  | 1 | Ost      |
| 1961 | 3  | 6  | 0 | Ost      |
| 1962 | 5  | 2  | 2 | Ost      |
| 1963 | 1  | 8  | 0 | Ost      |
| 1964 | 3  | 5  | 1 | Ost      |
| 1965 | 2  | 7  | 0 | Ost      |
| 1966 | 10 | 0  | 0 | Ost      |
| 1967 | 8  | 1  | 0 | Ost      |
| 1968 | 7  | 3  | 0 | Pyle     |
| 1969 | 3  | 7  | 0 | Pyle     |
| 1970 | 0  | 10 | 0 | Fuller   |
| 1971 | 1  | 8  | 1 | Fuller   |

| Year | W  | L | T | Coach   |
|------|----|---|---|---------|
| 1972 | 4  | 5 | 1 | Ost     |
| 1973 | 1  | 9 | 0 | Ost     |
| 1974 | 2  | 7 | 1 | Ost     |
| 1975 | 4  | 6 | 0 | Ost     |
| 1976 | 4  | 6 | 0 | Ost     |
| 1977 | 7  | 3 | 0 | Pappano |
| 1978 | 5  | 5 | 0 | Pappano |
| 1979 | 4  | 6 | 0 | Pappano |
| 1980 | 9  | 1 | 2 | Pappano |
| 1981 | 7  | 3 | 0 | Pappano |
| 1982 | 8  | 2 | 0 | Pappano |
| 1983 | 5  | 5 | 0 | Pappano |
| 1984 | 5  | 5 | 0 | Pappano |
| 1985 | 2  | 8 | 0 | Pappano |
| 1986 | 4  | 6 | 0 | Pappano |
| 1987 | 2  | 8 | 0 | Pappano |
| 1988 | 5  | 5 | 0 | Pappano |
| 1989 | 11 | 1 | 0 | Pappano |
| 1990 | 13 | 1 | 0 | Pappano |
| 1991 | 8  | 2 | 0 | Pappano |
| 1992 | 8  | 3 | 0 | Pappano |
| 1993 | 4  | 6 | 0 | Pappano |

| Year | W | L | T | Coach   |
|------|---|---|---|---------|
| 1994 | 6 | 4 | 0 | Pappano |
| 1995 | 7 | 4 | 0 | Pappano |
| 1996 | 6 | 4 | 0 | Pappano |
| 1997 | 3 | 7 | 0 | Pappano |
| 1998 | 9 | 2 | 0 | Pappano |
| 1999 | 7 | 3 | 0 | Pappano |
| 2000 | 5 | 5 | 0 | Pappano |
| 2001 | 5 | 5 | 0 | Pappano |
| 2002 | 5 | 6 | 0 | Pappano |
| 2003 | 3 | 7 | 0 | Cistone |
| 2004 | 7 | 3 | 0 | Cistone |
| 2005 | 6 | 5 | 0 | Cistone |
| 2006 | 5 | 5 | 0 | Cistone |
| 2007 | 4 | 6 | 0 | Cistone |
| 2008 | 6 | 4 | 0 | Cistone |
| 2009 |   |   |   |         |
| 2010 |   |   |   |         |
| 2011 |   |   |   |         |
| 2012 |   |   |   |         |
| 2013 |   |   |   |         |
| 2014 |   |   |   |         |
| 2015 |   |   |   |         |

## Revere Football Championships

League Championships: 1966, 1967, 1980, 1981, 1982, 1983, 1988, 1989, 1990, 1992, 1994, 1998

Playoff Qualifiers: 1980, 1989, 1990, 1992, 1995, 1998, 2002, 2005

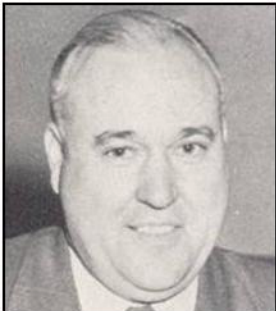
Playoff Regional Qualifiers: 1980, 1989, 1990

## Revere Football Coaching Records

| Coach        | Years     | Overall    | Overall    | Overall   | Winning      | Copley    | Copley    | League    | Playoff   | Playoff Results   |
|--------------|-----------|------------|------------|-----------|--------------|-----------|-----------|-----------|-----------|---|
|              | Coached   | Wins       | Losses     | Ties      | %            | Wins      | Losses    | Titles    | Qualifier |   |
| Smulbach     | 3         | 3          | 20         | 2         | 0.120        | 0         | 2         | 0         | N/A       |   |
| DiNapoli     | 4         | 10         | 25         | 1         | 0.333        | 0         | 3         | 0         | N/A       |   |
| Ost          | 16        | 65         | 79         | 6         | 0.433        | 6         | 10        | 2         | N/A       |   |
| Pyle         | 2         | 10         | 10         | 0         | 0.500        | 1         | 1         | 0         | N/A       |   |
| Fuller       | 2         | 1          | 18         | 1         | 0.052        | 0         | 2         | 0         | N/A       |   |
| Pappano      | 26        | 160        | 110        | 2         | 0.588        | 20        | 6         | 9         | 7         | State Runner-Up (90), Regional Champs (80), Regional Runner-Up (89) |
| Cistone      | 6         | 31         | 30         | 0         | 0.508        | 2         | 4         | 0         | 1         |   |
| <b>Total</b> | <b>59</b> | <b>282</b> | <b>292</b> | <b>12</b> | <b>0.491</b> | <b>29</b> | <b>28</b> | <b>11</b> | <b>8</b>  | <b>0</b>  |

# Revere Football Head Coach Profiles 1952-1976

## Kermit Smulbach—1952-1954—3-20-2



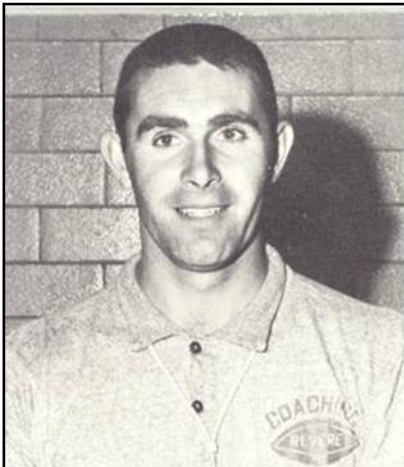
Kermit Smulbach was the first football coach in Revere History after previously coaching the Bath Buccaneers. As the coach of the Minutemen, Smulbach had a 3-20-2 record in three seasons. He also coached baseball and taught physical education. Prior to coaching at Bath, Coach Smulbach coached at Coventry where he was 4-19-2 in three years (1942-1944) as the football coach. After Revere, Smulbach moved on to coach football at Brunswick where he went 5-18 in three years.

## Frank DiNapoli—1953-1956—10-25-1



Frank DiNapoli was a standout high school and college athlete. In high school, he was the 1938 state runner-up in wrestling - losing during his senior year on a coin-flip decision. In college at the University of Akron, DiNapoli became a two-time letterwinner (1940-1941) at guard despite only being 5-foot-4 and 140 pounds. After graduating he coached and taught for four years before taking a job in South Bend, Washington. DiNapoli coached for five years at South Bend, including going 9-0 and winning the 1950 Washington State Championship in the "B" division. As the coach of the Minutemen, DiNapoli had a 10-25-1 record in four seasons. He eventually moved on to Crestwood High School where he became a legendary figure as a longtime history teacher, wrestling coach, and athletic director. His wrestling team won the Class AA state title in 1976. He was inducted into the Ohio Wrestling Hall of Fame in 1979. He retired in 1984 after 42 years of teaching and passed away in August of 2008 (1919-2008).

## Fred Ost—1957-1967 and 1972-1976—65-79-6



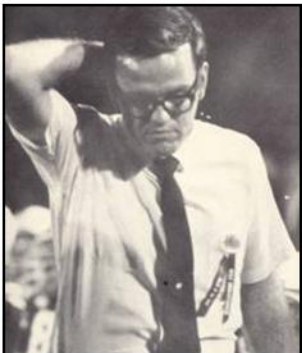
Fred Ost was a standout athlete in high school and college. He graduated from St. Vincent High School and then attended the University of Akron. He was a standout football and basketball player for both the Fighting Irish and the Zips. After graduating college, Ost taught and coached at Akron Central before arriving at Revere. At Revere, he was the head football coach, junior varsity basketball coach, and head track coach. Coach Ost had two terms as coach with the first lasting eleven years (1957-1967). The highlight of these years was the 1966 team that finished 10-0 and outscored their opponents 225-99 on their way to the Suburban League title. Coach Ost was honored as the Akron Touchdown Club's Coach of the Year in 1966. Coach Ost then left to become the head football coach at St. Edwards in Cleveland. In 1972, Coach Fred Ost returned as coach and continued for the next five years (1972-1976). During Coach Ost's second term, the team hovered around .500 but could not quite get over the hump. When Coach Ost retired, he did so with 65-79-6 career wins (47% winning percentage). Coach Ost eventually became the Principal at Revere and held that position until 1990 when he retired after 25 years in secondary education.

## Homer Pyle—1968-1969—10-10-0

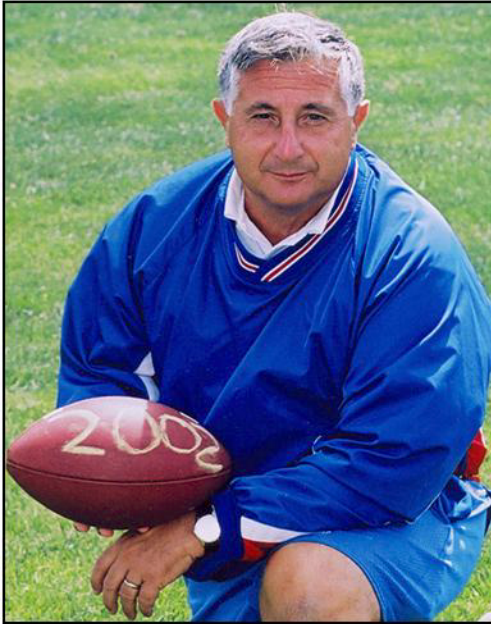


Homer Pyle was a standout football player at the University of Akron while majoring in English. He established himself as a successful football coach at Rittman, establishing a winning record for 12 years there. As the coach at Revere, Coach Pyle had a successful first year going 7-3. But in his second, the young team struggled and went 3-7.

## John Fuller—1970-1971—1-18-1



# Revere Football Head Coach Profiles 1977-Present



## Joe Pappano—1977-2002—160-110-2

Coach Joe Pappano was an standout athlete at St. V-M (Football, Basketball, Track, and Tennis) and then played football at University of Akron. He got a job at Revere in 1966 and became an assistant coach under Fred Ost in 1966 and 1967 before returning to his alma mater to coach for the next 7 years. In 1975 he returned to Revere as an assistant and also assisted in 1976. In 1977, Coach Joe Pappano took over the program and ushered in new era in Revere Football. Coach Pappano coached for 26 years and become one of the greats of the high school gridiron in the area. He finished with 160 wins, 9 league titles, 7 state qualifying teams and a 20-6 record against Copley. He was honored as the Akron Touchdown Club's Coach of the Year in 1980 and 1990, the Ohio High School Coach of the Year in Division II in 1980 and '89 and in Division III in '90, and is a member of the Summit County Sports Hall of Fame. One of Pappano's former players is Andy McCullom, center for the Detroit Lions, possessor of a Super Bowl ring he won while with the St. Louis Rams, and he is now in his 15th NFL season.

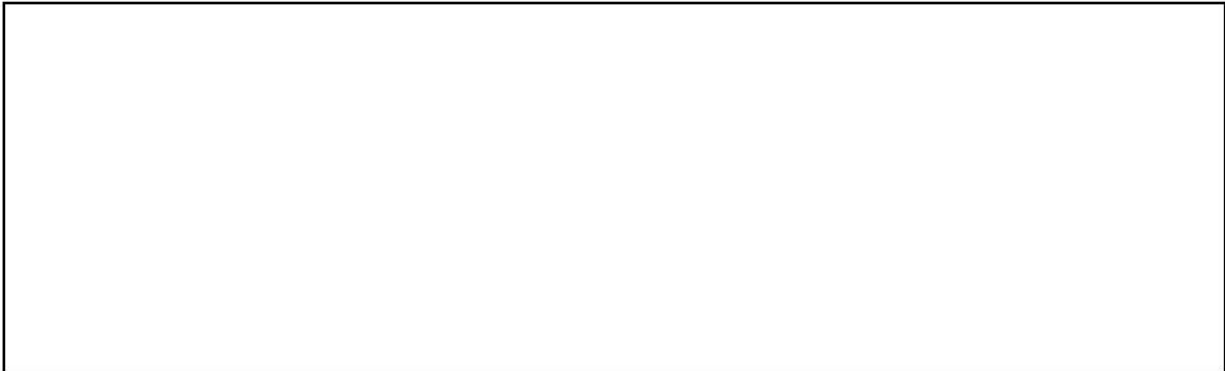
The highlights of Pappano's years were the 1980 and 1990 football teams. In 1980, the team finished 9-1-2, captured the Suburban League Title, and was the Region V Champions (losing to eventual state champion Youngstown Cardinal Mooney). In 1990, the team finished 13-1 and captured the Suburban League Title as well as finishing as the DIII State Runner-Up. The team—often times referred to as "The State Team" is considered the greatest team in Revere History, outscoring their opponents 286-156.

In 2002, the Revere Stadium was dedicated in his honor and now is called Joseph F. Pappano Stadium.



## Terry Cistone—2003-PRESENT—32-29

Terry Cistone has been a football coach for 29 years. He first started in 1979 as an assistant at St. V-M under his father, the legendary John Cistone (207 Victories and Four State Championships). After coaching at St. V-M for seven years while he finished college, Coach Cistone left to become the offensive coordinator at Firestone in 1986. He spent four years at Firestone and then one year as the defensive coordinator at Buchtel before arriving at Revere in 1991. He spent the next 12 years as an assistant under Coach Pappano, performing a variety of jobs including offensive coordinator and special teams coordinator at times during those years. In 2003, Coach Cistone was named the school's seventh coach. Coach Cistone is in his sixth year (2003-present) at the helm of the Minutemen Football Program. The program under Coach Cistone, has averaged 6 wins a year over this span including the state qualifying team in 2005.



## Special Mention

**In all successful programs there are many people that go unnoticed even though their dedication to the program runs very deep. In this section, we would like to recognize the important people from throughout the years that have helped to make Revere Football what it is today and what it will continue to be in the future.**

### Assistant Coaches

|                       |                        |                        |                       |
|-----------------------|------------------------|------------------------|-----------------------|
| Coach Dan Archer      | Coach Jerry Fry        | Coach Dave Molis       | Coach Dave Smith      |
| Coach Mike Aulino     | Coach John Fuller      | Coach Merv Nugent      | Coach Kermit Smulbach |
| Coach John Bergvall   | Coach Bill Gast        | Coach Dave Ost         | Coach Matt Soful      |
| Coach Jeff Bonacci    | Coach Gary Gough       | Coach Fred Ost         | Coach Tom Sustersic   |
| Coach Bob Buchanan    | Coach Mike Gibb        | Coach Joe Pappano      | Coach Fred Tomei      |
| Coach Tony Ciavarella | Coach Dave Giffin      | Coach Dave Parrish     | Coach Ed Tyrell       |
| Coach John Cistone    | Coach Jack Greynolds   | Coach Chuck Penzenik   | Coach Uber            |
| Coach Terry Cistone   | Coach Dan Hatton       | Coach Dave Peters      | Coach Wade Vantrease  |
| Coach Alan Cook       | Coach Phil Hatton      | Coach Ed Plants        | Coach Mike Vavra      |
| Coach Ray Cox         | Coach Phil Heyn        | Coach Geoff Price      | Coach Mike Velten     |
| Coach Bob DiMauro     | Coach Gerald Hutchison | Coach Homer Pyle       | Coach Lee Walker      |
| Coach Frank DiNapoli  | Coach Bob Jenkins      | Coach Neil Quirk       | Coach James Walter    |
| Coach Jeff Dallas     | Coach Eddie Johnson    | Coach Pete Rahas       | Coach Frank Weglicki  |
| Coach Mike Decker     | Coach Don King         | Coach Jeff Ramnytz     | Coach Brian Willis    |
| Coach Dan Emmett      | Coach Pete Klomp       | Coach Jim Roberts      | Coach Dave Wohlabaugh |
| Coach John Farren     | Coach Bob LaSalle      | Coach Rich Rybak       | Coach Joe Zwisler     |
| Coach Bob Fickes      | Coach Sid Laria        | Coach Ron Sabol        |                       |
| Coach Dave Flegal     | Coach Ryan Lekan       | Coach Larry Seiler     |                       |
| Coach Dale Fortner    | Coach Brian Li         | Coach Andy Shackelford |                       |
| Coach Dan Fouser      | Coach Steve Magoline   | Coach Al Smesko        |                       |

### Athletic Directors

|                |               |              |                 |
|----------------|---------------|--------------|-----------------|
| Bill Baker     | Phil Hatton   | Larry Lawson | Kermit Smulbach |
| Frank DiNapoli | Betsy Jelm    | Fred Ost     |                 |
| Dave Flegal    | Peter Klomp   | Todd Osborn  |                 |
| John Fuller    | George Kungle | Jim Rader    |                 |

### Equipment Managers

Mr. Carl Kolert

### Medical Staff

|                 |                    |              |
|-----------------|--------------------|--------------|
| Dr. Thomas Bear | Dr. William Moats  | Dr. Weingant |
| Dr. Robert Bell | Dr. William Motz   |              |
| Eric Moats      | Dr. John Schlemmer |              |

### Photographers-Videographers

|                 |                  |                   |
|-----------------|------------------|-------------------|
| Mr. Dave Elliot | Mr. Ed Johnson   | Mr. Fred Magoline |
| Dr. Flanagan    | Mr. Harold Laube | Mr. Oros          |

### Statisticians

|                |             |               |                |
|----------------|-------------|---------------|----------------|
| Al Scholl      | Chip Rarey  | George Kungle | Lee Bender     |
| Bill Wolfe     | Dave Hall   | Gina Wright   | Phil Hatton    |
| Brian Osborne  | David Ost   | Kelley Felix  | Sandy Taucher  |
| Candy Fisher   | Doug Farren | Kim McCann    | Tami Wright    |
| Charles Walker | Eric Miller | Kim Peterson  | Wade Vantrease |

# Miscellaneous Revere Coaching Staffs



## Student Managers

**Student Managers and Trainers have been a part of Revere Football since its inception in 1950. Through the years, they have been an integral part of the program and making things run on and off the field. Originally all the managers were boys (of all ages), and then girl managers were added in 1980. The managers/trainers have helped make Revere Football what it is today and what it will continue to be in the future.**

|                     |                    |                  |                   |                   |
|---------------------|--------------------|------------------|-------------------|-------------------|
| Abbert, Sarah       | Garger, Kim        | Larson, Kerry    | Remec, Angela     | Tripp, Leena      |
| Abraham, Missy      | Gibb, Lucy         | LeVoyer, Paig    | Riccardi, Christy | VanDermeer, Abbey |
| Albert, Sarah       | Gigliotti, Jen     | Lloyd, Betsy     | Riccardi, Jeannie | Viall, Ned        |
| Angelo, Christine   | Godard, Mike       | Lloyd, Deb       | Rogers, Julie     | Walker, Starr     |
| Banasiak, Liz       | Godard, Tim        | Lloyd, Vickie    | Rosebrock, Jenny  | Weidrick, Megan   |
| Barton, Jenny       | Gresham, Rachel    | Luther, Sarah    | Roussi, Stephanie | Wells, Carrie     |
| Carney, Betsy       | Griesmer, Kelly    | Luyster, Dean    | Shade, C          | Whalen, George    |
| Cern, Kerry         | Hajdu, Holly       | Luyster, Mark    | Shofner, Liz      | Wilson, Michelle  |
| Clinton, Kathy      | Harris, Katie      | Mann, Lisa       | Shupe, Samantha   | Worobel, Lori     |
| Couch, Allison      | Hatton, Sarah      | Mann, Susan      | Siiner, Inga      | Wright, Miranda   |
| Cowen, Debbie       | Heckel, Christy    | McCreery, Lou    | Smith, Angie      | Zanona, Jonalyn   |
| Craig, John         | Heckel, Teresa     | McDonald, D      | Snyder, Nate      | Zanona, Sue       |
| Crofoot, Amy        | Heyn, Kim          | McMullen, Kelly  | Spardy, Amy       | Zelling, Meghan   |
| Diehl, Kristen      | Hieber, Tracy      | Miller, Katie    | Starcher, K       | Zwisler, Sarah    |
| Dodd, Leah          | Hotchkiss, Allison | Miller, Lisa     | Sturgeon, Leslie  |                   |
| Fashinpaur, Kaitlyn | Hotchkiss, Karen   | Mistovich, Megan | Sues, Amy         |                   |
| Fickes, Jen         | Jones, Mike        | Mr. Kolar        | Summers, Jenny    |                   |
| Gabel, Maureen      | Kane, Cindy        | Murphy, Amanda   | Taucher, Kim      |                   |
| Gabriel, Ann        | Kerkian, Glen      | Myerson, M       | Taucher, MaryLou  |                   |
| Gaffney, Karen      | Kirk, Katie        | Olson, D         | Taucher, Sandy    |                   |
| Gaffney, Maureen    | Kirkland, Tracey   | Oros, Tiffany    | Thomas, Mandy     |                   |
| Gahan, R            | Koudelka, Brent    | Penzenik, Amy    | Thompson, Trayce  |                   |
| Garger, Cindi       | Kruszewski, Jill   | Raynor, Dave     | Tramonte, Rachel  |                   |





# Revere Football Team Awards



## Joe Pappano Award—MVP

The Joe Pappano Award is Revere Football's Most Valuable Player Award that is given annually and decided on by a team vote. Joe Pappano was a legendary coach at Revere for 26 years finished with 160 wins, 9 league titles, 7 state qualifying teams and a 20-6 record against Copley. In 2002, the Revere Stadium was dedicated in his honor and now is called Joseph F. Pappano Stadium.

## Coaches Award

The Coaches Award is awarded annually and decided on by a coaching staff vote. The winner of this award represents the best in Revere Football—Integrity, Leadership, Effort, Pride.

## Most Outstanding Offensive RB/WR Award

The Most Outstanding Offensive RB/WR Award is presented annually and decided on by a team vote.



## Fred Tomei Award—Most Outstanding Offensive Lineman

The Fred Tomei Award is Revere Football's Most Outstanding Offensive Lineman Award that is awarded annually and decided on by a team vote. Fred Tomei was an assistant coach at Revere for 30 years serving as the Offensive Line Coach for many of those years.



## Joe Zwisler Award—Most Outstanding Defensive LB/DB

The Joe Zwisler Award is Revere Football's Most Outstanding Defensive LB/DB Award that is awarded annually and decided on by a team vote. Joe Zwisler was an assistant coach at Revere for 30 years serving as the Defensive Coordinator for many of those years. Joe was also a 3-year letterman (1968-1970) at University of Akron as a DB.

## Most Outstanding Defensive Lineman

The Most Outstanding Defensive Lineman Award is presented annually and decided on by a team vote.

## Frank Pappano Memorial Award

The Frank Pappano Memorial Award is presented to a senior who has demonstrated extraordinary leadership and loyalty to the program. The award is in honor of Frank Pappano, the father of long time coach—Joe Pappano. Frank was loved athletics and was involved through his family and refereeing for over 40

## Revere Football Team Awards

|      | MVP                           | Best RB/WR                       | Best Lineman                     | Most Improved             | Best LB/DB             |
|------|-------------------------------|----------------------------------|----------------------------------|---------------------------|------------------------|
| 1954 |                               | Gerald Hutchison                 | Roger Schwing                    | Mike Lewis                |                        |
| 1955 | Jim Klein                     | Ernie Prem, Dick Powers          |                                  | Dave Zacher               | Denny Swartz           |
| 1956 | Carl Hanes                    | Dick Kerekese                    |                                  | Douglas Johnson           | Jon Short, Dave Zacher |
| 1957 |                               | Jon Short                        | John Gillette                    | Dave Jones                |                        |
| 1958 | Jon Short                     | Earl Holderfield                 | Larry Gearhart, Richard Gearhart | Dave Jones                |                        |
| 1959 | Dick Scuba                    | Earl Holderfield                 | Paul Wintermute, Jack Motz       | Phil Wisnieski            |                        |
| 1960 | Dick Scuba                    | Phil Wisnieski                   | Renee Balinski                   | Chuck Taylor              |                        |
| 1965 | Tom Jones                     | Gary Zipsir                      | Bill Stalnaker                   |                           |                        |
| 1966 | Jim Fickes                    | Mike Jones,<br>Chuck Penzenik    | Bob Stalnaker, Chris Zak         |                           |                        |
| 1967 | Mike Jones,<br>Chuck Penzenik | Bill Woodman,<br>Wayne Sovlanski | Don Everhard, David Raynor       |                           |                        |
| 1968 | Wayne Sovlanski               | Dick Kuhn                        | Bill Reid                        | Tim Truax, Doug Wisnieski |                        |

| Year | Joe Pappano Award | Coaches Award              | Outstanding Offensive RB/WR | Fred Tomei Award | Joe Zwisler Award | Outstanding Defensive Lineman Award |
|------|-------------------|----------------------------|-----------------------------|------------------|-------------------|-------------------------------------|
| 2003 | Jon Zak           | John Baker                 | Tyler Thurn                 | Jon Zak          | Josh Burkett      | Zaid Khatib                         |
| 2004 | Evan Laube        | Alex Mellion               | Evan Laube                  | Zaid Khatib      | Brandon Battig    | Zaid Khatib                         |
| 2005 | Tom Romito        | Brant Appel<br>Jared Popik | Derek Muffley               | Kevin Kolar      | Trevor Shaver     | Brian Hatt                          |
| 2006 | Ian Reed          | RT Johnston                | Ian Reed                    | Sam Petersen     | Louie Clark       | Tony Delgross                       |
| 2007 | Abe Addison       | Josh Baranowski            | Abe Addison                 | Sam Petersen     | Dave Flegal       | Pat Lyden                           |
| 2008 | Joe Calvey        | Tyler Singleton            | Andrew Anacki               | Ed Luther        | Joe Calvey        | Donald Day                          |
| 2009 |                   |                            |                             |                  |                   |                                     |
| 2010 |                   |                            |                             |                  |                   |                                     |
| 2011 |                   |                            |                             |                  |                   |                                     |
| 2012 |                   |                            |                             |                  |                   |                                     |
| 2013 |                   |                            |                             |                  |                   |                                     |
| 2014 |                   |                            |                             |                  |                   |                                     |
| 2015 |                   |                            |                             |                  |                   |                                     |

## Revere Football's Frank Pappano Memorial Award

| Year | Name                               | Year | Name               | Year | Name         |
|------|------------------------------------|------|--------------------|------|--------------|
| 1980 | Chris Zajac                        | 1992 | Isreal Gersten     | 2005 | Sarah Hatton |
| 1981 | John Kovak                         | 1993 | Matt Soful         | 2006 | Brian Hatt   |
| 1982 | David Hecmanczuk                   | 1994 | Brad Opsincs       | 2007 | RT Johnston  |
| 1983 | David Snowball                     | 1995 | Phil Heyn          | 2008 | Pat Lyden    |
| 1984 | Chris Hackenberg                   | 1996 | Sarah Luther       | 2009 |              |
| 1985 | Bob McCollum                       | 1997 | John Zaropolas     | 2010 |              |
| 1986 | Tim Pajk                           | 1998 | Jeremy Dziczkowski | 2011 |              |
| 1987 | Mike Newell                        | 1999 | Phil Angelo        | 2012 |              |
| 1988 | Daniel Michalski                   | 2000 | Jeremy Willman     | 2013 |              |
| 1989 | William Oros                       | 2001 | Nate Hensley       | 2014 |              |
| 1990 | Andrew Shackelford<br>Dana Kreeger | 2002 | George Salo        | 2015 |              |
| 1991 | Doug Farren                        | 2003 | Josh Burkett       | 2016 |              |

# Revere Football Traditions: Revere Vs. Copley Rivalry

The rivalry actually began prior to the formation of Revere, back when the Bath Buccaneers and the Richfield Rockets played against the Copley Indians in the Old Summit County League. The game only intensified after the unification of the Bath and Richfield football teams in 1950. As the October 1955 edition of the *Revere Lantern* referred to it, the meeting of these two teams on the football field is a “Classic Old Rival Gridiron Contest.”

The game then took on even more significance when in 1968—the student councils of Revere and Copley jointly purchased a \$42.50 bell, which they named the “Victory Bell”, with the winning team claiming the rights to the bell for that year. Revere won the bell in the first year, beating Copley 33-20 on October 11, 1968. In the early 1980’s Copley students stole the bell from Revere and vandalized it, as a result—Copley was forced to purchase a replacement bell. The original stand was also replaced in 2001 after Copley painted and carved in the original when they held it in 1999 and 2000.

The game took on a new tone in 1977 when Joe Pappano took over as the Head Coach at Revere. Pappano, a Copley resident, embraced this game and made sure his players understood the importance of this rivalry and worked especially hard during “Copley Week”—including turning on the stadium lights to practice after the sun had already set. Pappano also started the tradition of the “Beat Copley” T-shirts that were awarded to the football team if they defeated Copley.

Then this rivalry had the “Twelve Year War”! This marks a 12-year period (1990-2002) where Joe Pappano faced off against Dan Boarman. Both coaches were former players, coaches, and friends at St. Vincent-St. Mary. During this time, Revere held the advantage 9 wins to Copley’s 4 wins.



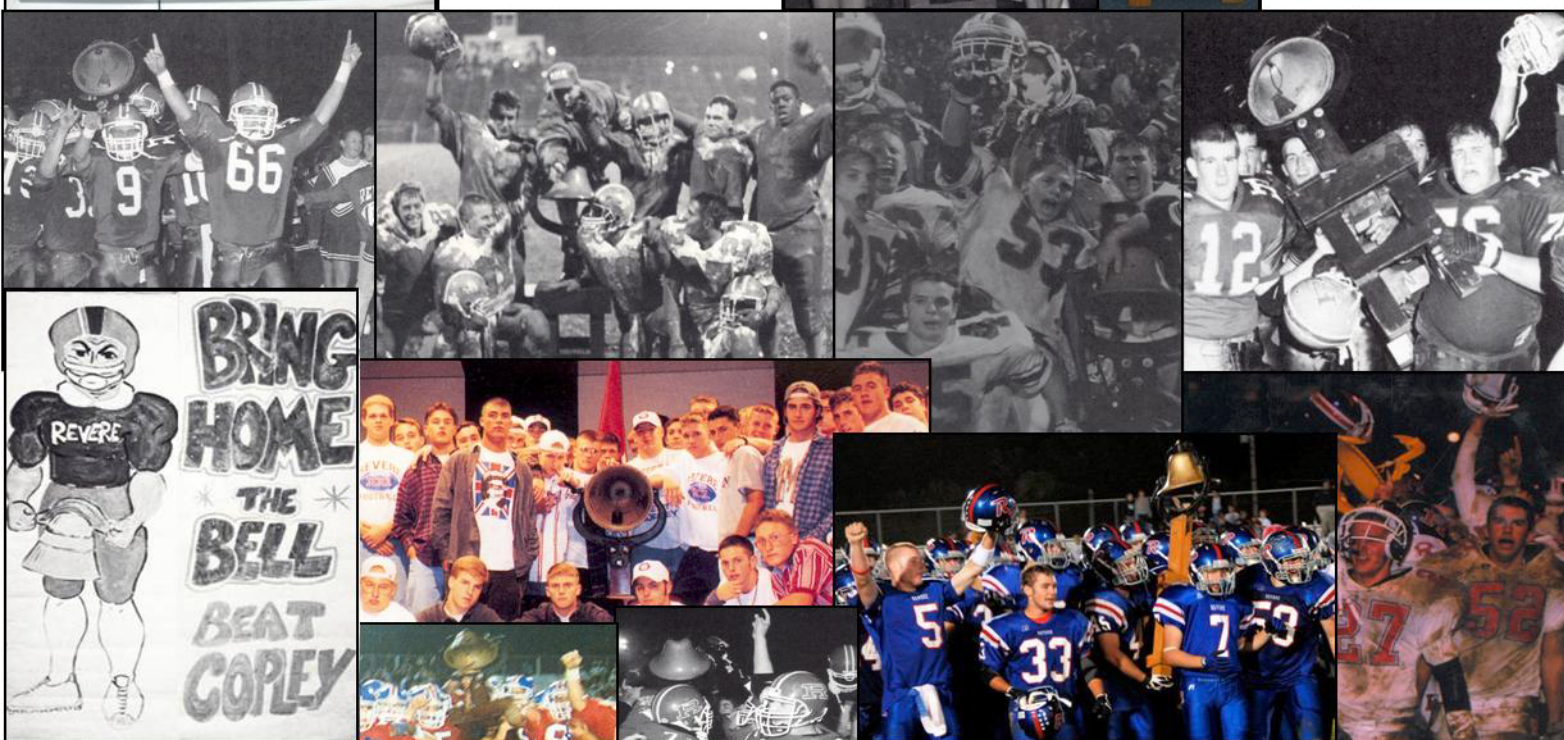
## Revere-Copley “Countdown Clock”

This clock sits on the wall of the locker room and reminds the football team of the next “Classic Old Rival Gridiron Contest” versus Copley for the “Victory Bell”



## Revere—Copley “Victory Bell”

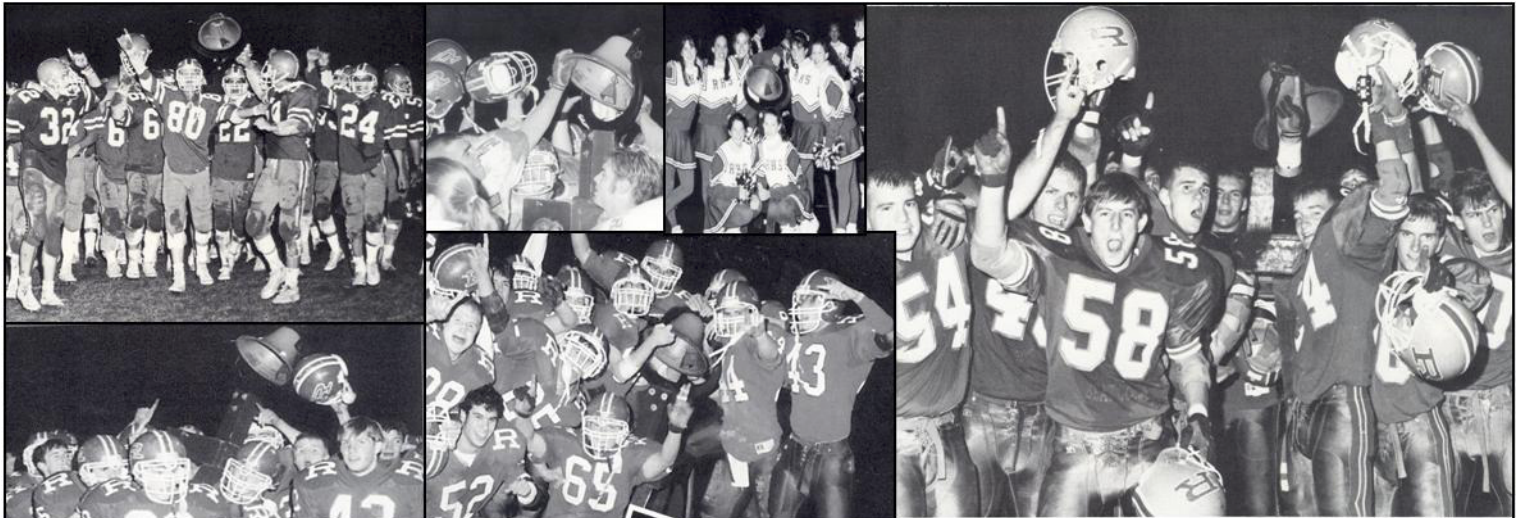
In 1968—the student councils of Revere and Copley jointly purchased a \$42.50 bell, which they named the “Victory Bell”, with the winning team claiming the rights to the bell for that year.



# Revere Football Traditions: Revere Vs. Copley Rivalry

| Year | Beat Copley      | RHS Score | CHS Score |
|------|------------------|-----------|-----------|
| 1950 | LOST             | 0         | 69        |
| 1951 | LOST             | 15        | 27        |
| 1952 | N/A—Did not Play | N/A       | N/A       |
| 1953 | N/A—Did not Play | N/A       | N/A       |
| 1954 | LOST             | 7         | 21        |
| 1955 | LOST             | 0         | 6         |
| 1956 | LOST             | 7         | 13        |
| 1957 | BEAT COPLEY      | 6         | 0         |
| 1958 | LOST             | 0         | 22        |
| 1959 | BEAT COPLEY      | 28        | 6         |
| 1960 | LOST             | 12        | 24        |
| 1961 | LOST             | 6         | 28        |
| 1962 | LOST             | 14        | 15        |
| 1963 | LOST             | 14        | 30        |
| 1964 | LOST             | 12        | 46        |
| 1965 | LOST             | 12        | 46        |
| 1966 | BEAT COPLEY      | 21        | 14        |
| 1967 | BEAT COPLEY      | 28        | 14        |
| 1968 | BEAT COPLEY      | 33        | 20        |
| 1969 | LOST             | 6         | 29        |
| 1970 | LOST             | 0         | 42        |
| 1971 | LOST             | 0         | 18        |
| 1972 | BEAT COPLEY      | 7         | 6         |
| 1973 | LOST             | 6         | 14        |
| 1974 | LOST             | 0         | 21        |
| 1975 | BEAT COPLEY      | 16        | 0         |
| 1976 | LOST             | 0         | 6         |
| 1977 | BEAT COPLEY      | 14        | 6         |
| 1978 | BEAT COPLEY      | 8         | 0         |
| 1979 | BEAT COPLEY      | 10        | 9         |

| Year | Beat Copley | RHS Score | CHS Score |
|------|-------------|-----------|-----------|
| 1980 | BEAT COPLEY | 21        | 12        |
| 1981 | BEAT COPLEY | 28        | 7         |
| 1982 | BEAT COPLEY | 8         | 3         |
| 1983 | BEAT COPLEY | 7         | 0         |
| 1984 | LOST        | 7         | 10        |
| 1985 | LOST        | 15        | 35        |
| 1986 | BEAT COPLEY |           |           |
| 1987 | BEAT COPLEY | 30        | 13        |
| 1988 | BEAT COPLEY | 28        | 7         |
| 1989 | BEAT COPLEY | 27        | 0         |
| 1990 | BEAT COPLEY | 35        | 20        |
| 1991 | BEAT COPLEY | 10        | 3         |
| 1992 | BEAT COPLEY | 30        | 6         |
| 1993 | LOST        | 10        | 14        |
| 1994 | BEAT COPLEY | 19        | 14        |
| 1995 | BEAT COPLEY | 6         | 0         |
| 1996 | BEAT COPLEY | 35        | 14        |
| 1997 | BEAT COPLEY | 19        | 3         |
| 1998 | BEAT COPLEY | 28        | 13        |
| 1999 | LOST        | 7         | 24        |
| 2000 | LOST        | 34        | 41        |
| 2001 | BEAT COPLEY | 14        | 9         |
| 2002 | LOST        | 14        | 21        |
| 2003 | LOST        | 14        | 21        |
| 2004 | LOST        | 10        | 18        |
| 2005 | LOST        | 20        | 23        |
| 2006 | BEAT COPLEY | 20        | 5         |
| 2007 | LOST        | 17        | 21        |
| 2008 | BEAT COPLEY | 17        | 14        |
| 2009 |             |           |           |



## Revere Football Traditions: P-P-P Game Plate

In 1980, the Revere Field House (now know as the William E. Moats Field House) became the home for the Football Minutemen. As the team would leave the locker room, they would hit the top of the doorway as they exited. In 1994, an addition was built onto the field house and the football team got a new home but continued to hit the top of the doorway as they exited the locker room. In 1995, Coach Pappano and the captains (Sonny Bare, Josh Gordon and Phil Heyn) decided they wanted to come up with something new that would keep with the tradition but be more formal. Drawing inspiration from the “Play Like A Champion” sign that Notre Dame and Oklahoma have used at the exit of their locker rooms, the group came up with the idea for a Revere Game Plate. The sign would be placed just inside the locker room exit for the players to hit as they exit the locker room. The basis for the wording was from Coach Pappano’s principals that he had built the program on—PRIDE-POISE-PERFORMANCE. Ted Bear (father of Sonny Bare '96) and Gary Gibb (father of Mike Gibb '96 and Brian Gibb '00) funded, fabricated,

**REVERE**  
**PLAYS WITH**  
**PRIDE**  
**POISE**  
**PERFORMANCE**

DONATED BY  
T. BEAR / G. GIBB  
1995

# Revere Football Traditions

## Homecoming/Copley Bon Fire

Traditional, the athletic department has sponsored a bonfire on the Thursday before either the Copley Game or Homecoming.

## “Hey Football Player”

This is a traditional skit done by the cheerleaders saluting the senior football players.



## Senior Horseshoe

Senior Horseshoe tradition was started in 1977 when Coach Pappano took over as the head coach. It was held the last Thursday of the season with the underclassmen forming a horseshoe and calling each senior out to the group. Then the seniors “Will” the underclassmen mementos and miscellaneous keepsakes. Example, a facemask has been handed down by the starting quarterbacks since Derek Hotchkiss

## Senior Dinners

Thursday Night Senior Dinners (formerly known as Thursday Night Spaghetti Dinners—were started by the

## Revere Gridiron Golf Outing

In 1990, Coach Joe Pappano and the 1990 football seniors’ parents organized the first golf outing. The outing acts as a reunion for former players as well as a fundraiser for the football program. This year, the outing will celebrate its 20th Anniversary.



## Pad Pounding

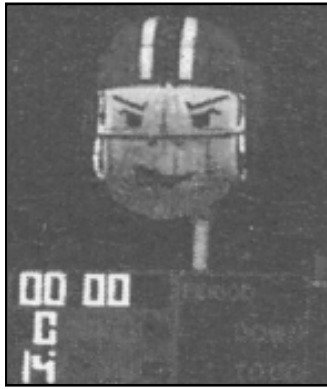
In 1995, the captains (Sonny Bare, Josh Gordon, and Phil Heyn) began a rhythmic pounding of pads and clapping before starting the Minutemen’s tradition R-E-V-E-R-E jumping jacks. This specific rhythm was used until 2008 when the seniors changed to a new rhythm—which is still used today.

## Revere Football Youth Camp

In 2001, the Annual Camp was founded by, then assistant coach and current head coach, Terry Cistone. The camp was formed to teach kids about the game of football and create excitement about Revere Minutemen Football. Since its inception, over 500 campers have been through the camp, including most of the current Minutemen football

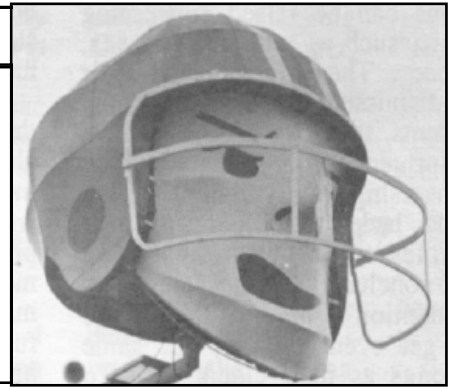


## Revere Football: Miscellaneous History



### **“The Helmet”**

In the fall of 1988, Selby Industries donated a huge 12'x12' football helmet to RHS—the helmet was installed over the scoreboard. A year later, they added an illuminant face and then added several other features over the next few years. It was retired and taken down in 19??. But everyone that was around Revere football still remembers it and countless number of visitors still remember getting directions that ended with “just look for the



### **Female Football Player**

In 1999, Revere had its first and only female football player. Melissa Bickett came out for the team her senior year as a kicker. She was 1/5 in extra point tries in her only year. Melissa was also the starting goalie on the women's soccer team and an extremely successful member of the track & field team. In 2000, she was the state champion in the discuss and 3rd in the shot put. Melissa went on to attend the University of Michigan where she was a team captain as a senior and the Big Ten Champion in the discuss. Melissa's brothers (Jay-'93 and Tom-'09) were both letter-

# Revere Football: Miscellaneous History